

## 1164 Chobert

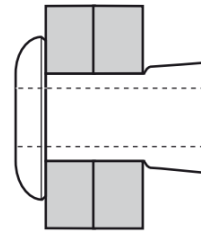
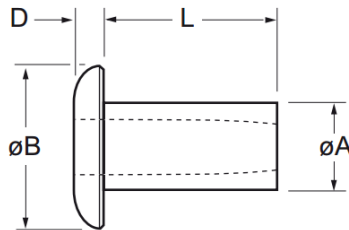
Steel · Dome head  
3.2 mm (1/8") undersized

### Features

- Consistent controlled clamp, ideal for soft or brittle materials
- Internally tapered bore ensures consistent light clamp to reduce potential damage to materials
- Expands radially during installation to ensure maximum hole fill
- Lower in-place costs than welding or nail rivets
- Ideal pivot pin or hose tail
- Can be bowl fed for larger volume applications using automated equipment

### Material

- Aluminium alloy, natural (2.5% Mg)



Part No.	Size ø	Grip Range		Hole Size rec.	øB max.	D max.	L ± 0.18	øA max.	Fasteners per pod ± 1
		min.	max.						
01164-00404	3.2 (1/8") under- sized	0.00	1.60	3.05	5.12	1.15	7.92	3.01	71
01164-00406		1.60	3.17						51
01164-00408		3.17	4.77						39
01164-00410		4.77	6.35						32
01164-00412		6.35	7.92						27
01164-00414		7.92	9.50						23
01164-00416		9.50	11.07						21

### Assembly Applications

- Automotive
- Electronic components
- Sheet metal
- Electrical engineering
- Domestic appliances
- General light fabrication
- Injection moulded components

